



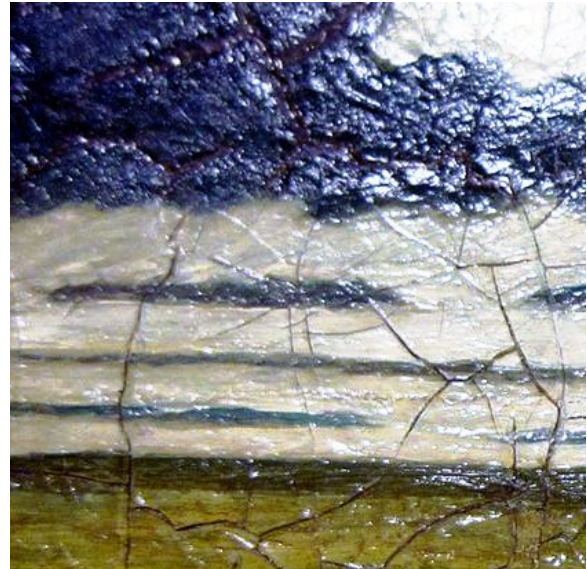
Utrecht Art Supplies Product Profiles: Japan Drier



Utrecht Japan Drier is a prepared blend of catalytic siccatives that supports accelerated drying. Japan Drier helps overcome the naturally slow drying rate of certain oil paint colors and mediums, and can make slow-drying colors more practical to use.

Japan Drier was originally developed to provide a convenient, reliable additive for materials used in the historical laquering process called Japanning, designed to imitate *urushi-nuri* (genuine Japanese black lacquer). An early automotive paint was also called "Japan Black" for its resemblance to real Asian lacquer. Japanning formulas varied, but most included drying oils and cooked oil-resin varnishes which were induced to dry quickly by use of siccatives and heat.

Japan Drier consists of metallic salts in a base of solvent and oil for easy measurement. Used properly, Japan Drier can bring drying rates to a more practical range while preserving durable results.



Excessive use can lead to paint defects including darkening and cracking. Oil paint that has been mixed directly with too much Japan Drier can exhibit skinning with a wrinkled top surface, with wet paint beneath.

Because Japan Drier can potentially have destructive effects on paint when used excessively, it requires some care and knowledge for effective use. Many traditional recipes for oil painting mediums call for Japan Drier to be added in precise amounts, usually in amounts no greater than a few drops per batch. For best results, use Japan Drier in small proportion to a traditional painting medium, preferably according to a tested formula.

Questions? [Ask the Expert](#)

Intended for reference only. Observe all package instructions. Dick Blick Holdings/Utrecht Art Supplies is not responsible for any damage to personal property that may result from use of the information presented herein. © Copyright 2016 Dick Blick Holdings Inc. All rights reserved.