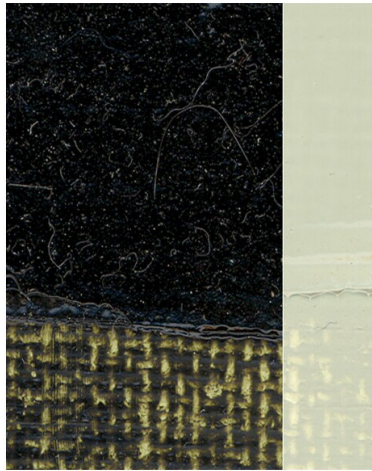




Utrecht Art Supplies

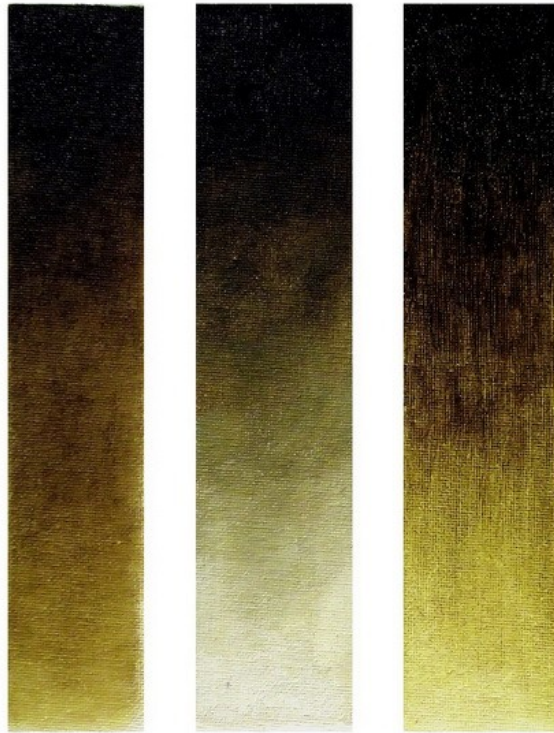
Product Profile: Olive Green Professional Artist's Oil Color



- **Artist's Oil Color- Olive Green**
- **Pigment content:** Prussian Blue PB27, Azo Yellow PY150, Alizarin Crimson PR83
- **Vehicle:** Alkali-refined linseed oil
- **Opacity:** Transparent
- **Lightfastness:** Average
- **Manufacturing method:** Mechanically milled
- **Drying rate:** Slow
- **Primary application:** Oil painting on traditional supports
- **Secondary applications:** Staining wood, toning grounds



Utrecht Olive Green Oil Color is a Utrecht-exclusive blended hue that offers distinct earthy qualities with good transparency and unusual undertones. This deep, transparent green which is made using a blend of Prussian Blue, Azo Yellow and Alizarin Crimson.



Undertone

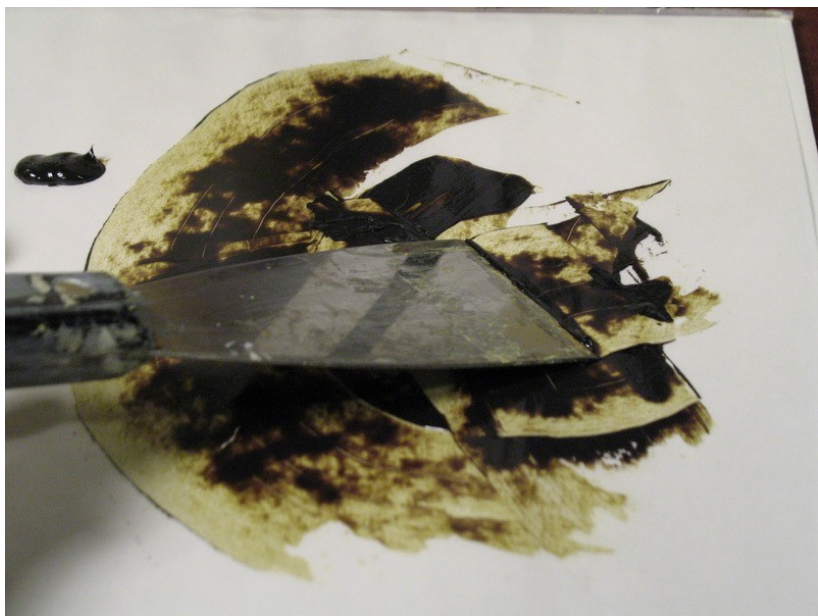
Tint

Glaze

Olive Green boasts a wide range from deep, tarry earth tones to organic, botanical hues to celadon tints.



Used as a glaze (upper left), Olive Green yields warmer yellowish tones perfect for landscape. Mixed with white (lower right), the result is a cooler grey-green ideal for blocking in portraits and figures.



Straight from the tube, Olive Green is dense and deep. Blend with other transparent colors (Ultramarine Blue, Alizarin Crimson) for unusual darks.



Blend with painting medium to "open up" the color and reveal warm undertones.

Questions? [Ask the Expert](#)

Intended for reference only. Observe all package instructions. Dick Blick Holdings/Utrecht Art Supplies is not responsible for any damage to personal property that may result from use of the information presented herein. © Copyright 2013 Dick Blick Holdings Inc. All rights reserved.